



Model Number

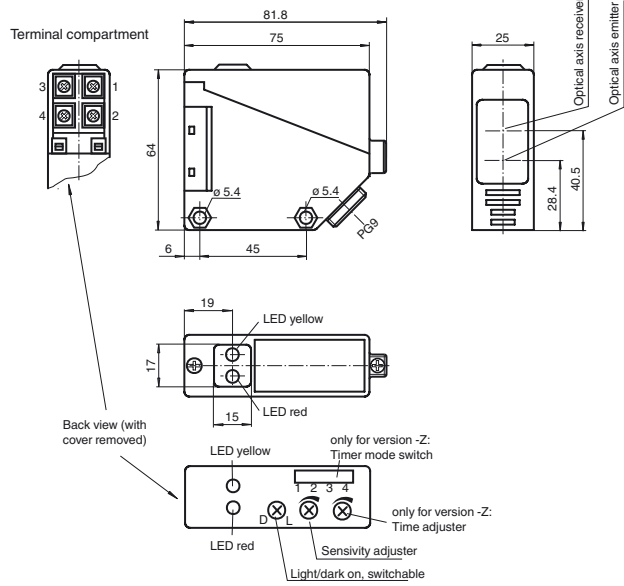
RL39-8-800-AS-i/116

Diffuse mode sensor
with terminal compartment

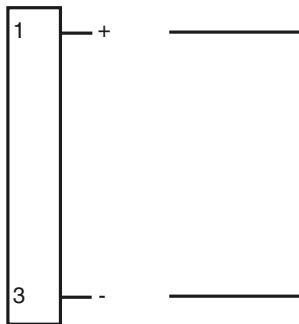
Features

- Infrared light
- Light/dark ON, switchable
- AS-Interface
- Protection degree IP67

Dimensions



Electrical connection



Release date: 2011-10-17 08:43 Date of issue: 2011-10-17 088829_eng.xml

Technical data**General specifications**

Detection range	0 ... 800 mm
Adjustment range	65 ... 800 mm
Reference target	standard white 200 mm x 200 mm
Light source	IRED
Light type	modulated infrared light
Approvals	CE
Ambient light limit	10000 Lux

Indicators/operating means

Function display	LED yellow: switching state LED red: pre-fault indication
Controls	Detection range adjuster

Electrical specifications

Operating voltage	U_B	via AS-Interface network
Ripple		10 %
No-load supply current	I_0	≤ 40 mA
Time delay before availability	t_v	≤ 50 ms

Output

Switching type	light/dark on	
Signal output	AS-Interface	
Switching frequency	f	≤ 100 Hz
Response time		≤ 5 ms

Standard conformity

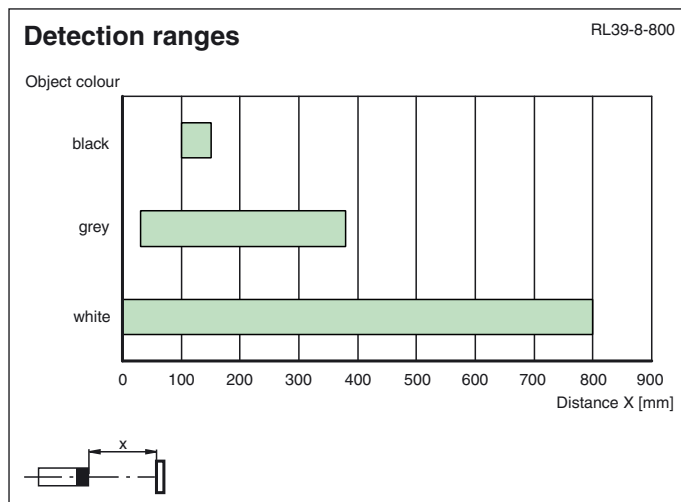
Standards	EN 60947-5-2
-----------	--------------

Ambient conditions

Ambient temperature	-25 ... 55 °C (-13 ... 131 °F)
Storage temperature	-40 ... 55 °C (-40 ... 131 °F)

Mechanical specifications

Protection degree	IP67
Connection	terminal compartment PG9, ≤ 2.5 mm ²
Material	
Housing	PBT
Optical face	PMMA
Mass	100 g

Curves/Diagrams**AS-Interface programming**

Address	preset to 00, can be changed via Busmaster or programming devices
IO code	1
ID code	1

Data bit

Bit	Function
D0	switch output
D1	pre-fault indication (0=ON, 1=OFF)
D2	ready to operate
D3	not used

Parameter bit

Bit	Function (1/0)
P0	not used
P1	switch output, light*/dark ON
P2	pulse extension (20 ms) OFF*/ON
P3	pulse extension of light*/dark signals (OFF/ON-Delay)

Accessories**VBP-HH1-V3.0-KIT**

AS-Interface Handheld with accessory

VBP-HH1

Handheld programming device

* Default setting

Additional Information

Conventional use:

The reflex light scanner contains the emitter and receiver in a single housing. The light from transmitter is beamed back from the recorded object is evaluated by the receiver. The detection range depend on the object colour. With dark or very small objects the detection range reduces.

Mounting instructions:

The sensor can be fastened over the through-holes directly or with the included mounting bracket. The base surface must be flat to avoid distorting the housing during mounting. It is advisable to secure the bolts and screws with washers so that the sensor does not become misaligned.

Instructions for adjustment:

Adjust the sensor on the background. If the yellow LED illuminates, the detection range needs to be reduced with the detection range adjuster, until the yellow LED goes off.

Object detection check:

Position the object into the light beam. Position light spot on object. If the object is detected, the yellow LED illuminated. If it does not light up, further to adjust the detection range with the potentiometer, until the yellow LED lights up. The red LED flashes if reception deteriorates (e.g. soiled lenses or by maladjustment) and when falling short of the stability control.

Illustration:

We recommend that you clean the optical interfaces and check the plug-in connections and screw connections at regular intervals.