



Model Number

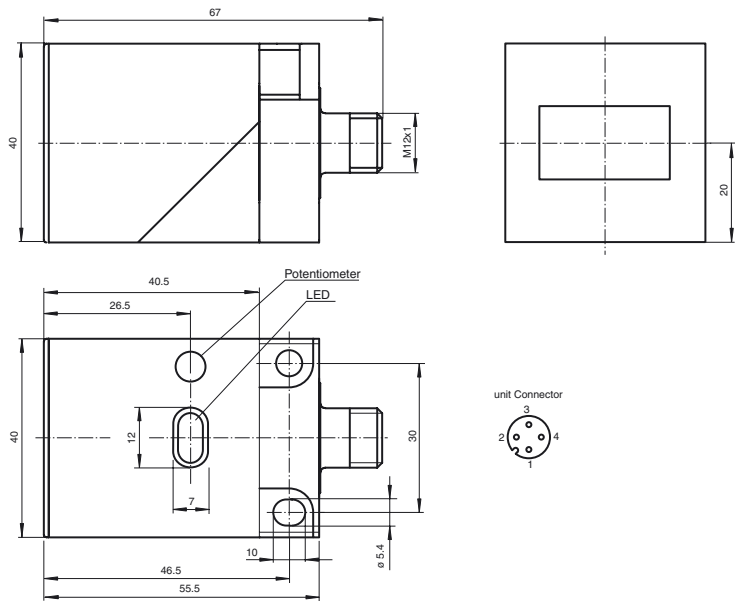
OBT200-L2F-E5-V1

Diffuse mode sensor
with 4-pin, M12 connector

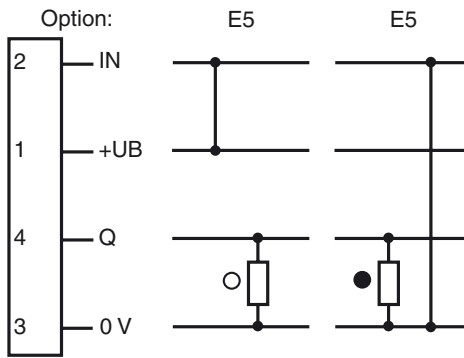
Features

- Sensor for the detection of round, strongly reflecting objects.
- Suitable for detecting gaps between glasses or PET bottles
- Objects arranged in a row can be detected without interruption of the signal
- The gap width can be adjusted via a potentiometer (Range 5 ... 20 mm)

Dimensions



Electrical connection



○ = Light on
● = Dark on

Release date: 2007-06-19 16:44 Date of issue: 2011-01-26 098491_ENG.xml

Subject to modifications without notice

Pepperl+Fuchs Group
www.pepperl-fuchs.com

USA: +1 330 486 0001
fa-info@us.pepperl-fuchs.com

Germany: +49 621 776-4411
fa-info@pepperl-fuchs.com

Copyright Pepperl+Fuchs
Singapore: +65 6779 9091
fa-info@sg.pepperl-fuchs.com

Technical data**General specifications**

Sensing range	10 ... 30 mm
Adjustment range	5 ... 20 mm
Reference target	PET bottle
Light source	LED
Light type	modulated visible red light
Approvals	CE
Operating mode	light/dark on, programmable
Ambient light limit	10000 Lux

Indicators/operating means

Function display	LED yellow: switching state LED red: pre-fault indication
Controls	sensitivity adjustment (Gap between the bottles)

Electrical specifications

Operating voltage	U_B	10 ... 30 V DC
Ripple		10 %
No-load supply current	I_0	≤ 30 mA
Time delay before availability	t_v	≤ 80 ms

Input

Control input	light on +UB dark on: 0 V
---------------	------------------------------

Output

Switching type	light/dark on	
Signal output	1 PNP, complementary short-circuit protected, reverse polarity protected (E5)	
Switching voltage	max. 30 V DC	
Switching current	max. 200 mA	
Voltage drop	U_d	≤ 2.5 V
Switch-on delay	t_{on}	≥ 1 ms
Switching frequency	f	≤ 100 Hz
Response time		≤ 5 ms

Standard conformity

Standards	EN 60947-5-2
-----------	--------------

Ambient conditions

Ambient temperature	0 ... 50 °C (32 ... 122 °F)
Storage temperature	-40 ... 80 °C (-40 ... 176 °F)

Mechanical specifications

Protection degree	IP67
Connection	connector M12 x 1, 4-pin
Material	
Housing	PBT
Optical face	scratch resistant plastic lens
Mass	60 g

Approvals and certificates

CCC approval	Products with a maximum operating voltage of ≤36 V do not bear a CCC marking because they do not require approval.
--------------	--

The sensor detects the distance between curved, strongly reflecting objects (e.g. bottles). The switch output is activated, if the distance between the objects exceeds a preset value. The value can be adjusted, via the potentiometer, within the limits 5 ... 20 mm.