



Model Number

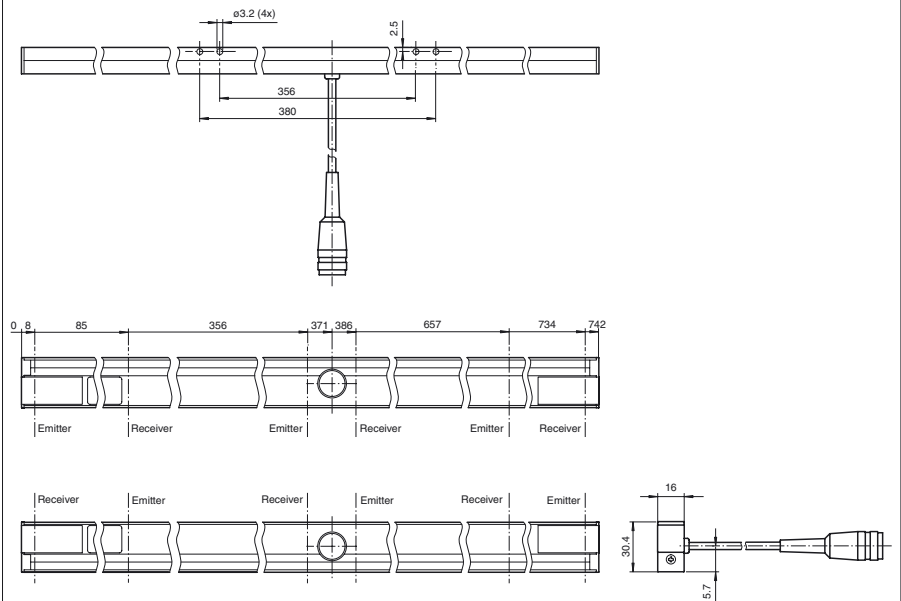
PLV-PLP-6-700

Light grid
with fixed cable and Binder connector

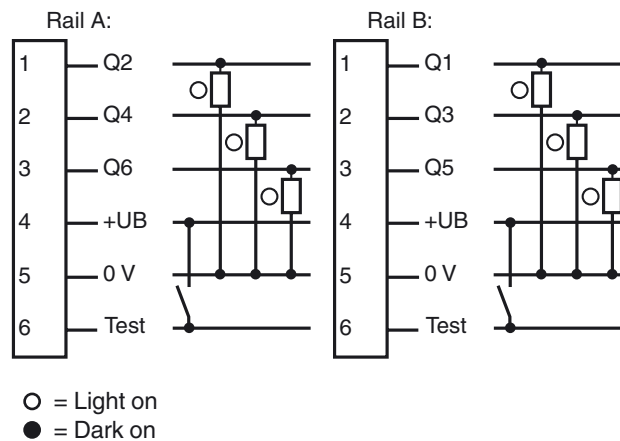
Features

- Automation light grid with single-beam evaluation
- 6-beam
- Test input

Dimensions



Electrical connection



Technical data**General specifications**

Effective detection range	0 ... 0.8 m
Threshold detection range	1.2 m
Light source	IREL
Light type	modulated infrared light , 950 nm
Field height	726 mm
Number of beams	6
Angle of divergence	Emitter: +/- 6 ° Receiver: +/- 8 °
Ambient light limit	50000 Lux

Functional safety related parameters

MTTF _d	71.7 a
Mission Time (T _M)	20 a
Diagnostic Coverage (DC)	60 %

Indicators/operating means

Function display	LED red, lights up with receiver lit
------------------	--------------------------------------

Electrical specifications

Operating voltage	U _B	10 ... 30 V DC
No-load supply current	I ₀	≤ 150 mA

Input

Test input	emitter deactivation at +U _B
------------	---

Output

Switching type	light on	
Signal output	per channel 1 PNP output, short-circuit protected, reverse polarity protected, open collector	
Switching voltage	max. 30 V DC	
Switching current	max. 200 mA	
Switching frequency	f	16 Hz
Response time	30 ms	

Ambient conditions

Ambient temperature	-20 ... 60 °C (-4 ... 140 °F)
Storage temperature	-30 ... 70 °C (-22 ... 158 °F)

Mechanical specifications

Protection degree	IP50
Connection	Connecting cable with Connector 6-pin, Series 680, (Binder) , Length: 570 mm
Material	
Housing	aluminum / plastic
Optical face	PMMA

Compliance with standards and directives

Standard conformity	
Product standard	EN 60947-5-2:2007 IEC 60947-5-2:2007

Approvals and certificates

CCC approval	Products with a maximum operating voltage of ≤36 V do not bear a CCC marking because they do not require approval.
--------------	--

Accessories**OMH-PLV-PLP**

Mounting bracket for light grids, for rear or side wall installation