



**Model Number**

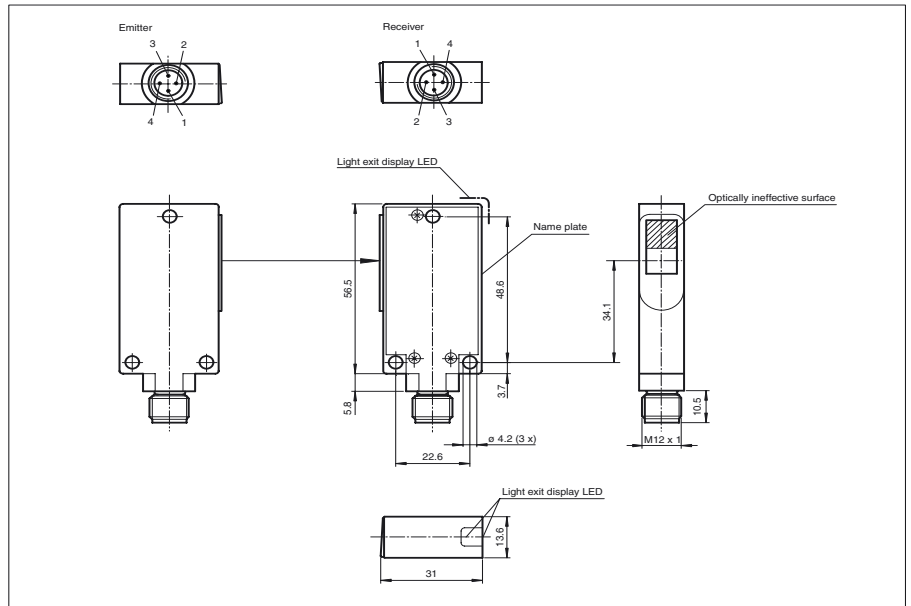
**M40/MV40-1383**

Thru-beam sensor  
with M12, 4-pin metal connector

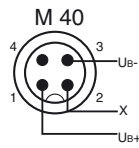
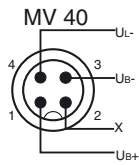
**Features**

- Sturdy aluminium housing
- Scratch-resistant and solvent resistant optical covering made of glass
- Plug connection
- Built-in LED, as operating and function indicator

**Dimensions**



**Electrical connection**



○ = Light on  
● = Dark on

**Technical data****General specifications**

Effective detection range	0 ... 3.5 m
Light source	IREC
Approvals	CE
Light type	infrared, modulated light
Angle of divergence	approx. 4 °

**Indicators/operating means**

Function display	LED yellow, lights up when light beam is unblocked, flashes when falling short of the stability control
------------------	---

**Electrical specifications**

Operating voltage	10 ... 30 V DC
Ripple	5 %
No-load supply current	$I_0$ < 40 mA (emitter) ; < 40 mA (receiver)

**Output**

Switching type	Light ON
Signal output	1 pnp, short-circuit proof, with 10 kOhm pull-down-resistor
Switching voltage	max. 30 V DC
Switching current	max. 200 mA
Switching frequency	f 350 Hz
Response time	1 ms

**Standard conformity**

Standards	EN 60947-5-2
-----------	--------------

**Ambient conditions**

Ambient temperature	-20 ... 60 °C (253 ... 333 K)
Storage temperature	-20 ... 75 °C (253 ... 348 K)

**Mechanical specifications**

Protection degree	IP65 according to DIN 40050
Connection	Metal connector M12, 4-pin
Material	
Housing	aluminium diecasting black anodised
Optical face	glass
Mass	100 g (device)