



Model Number

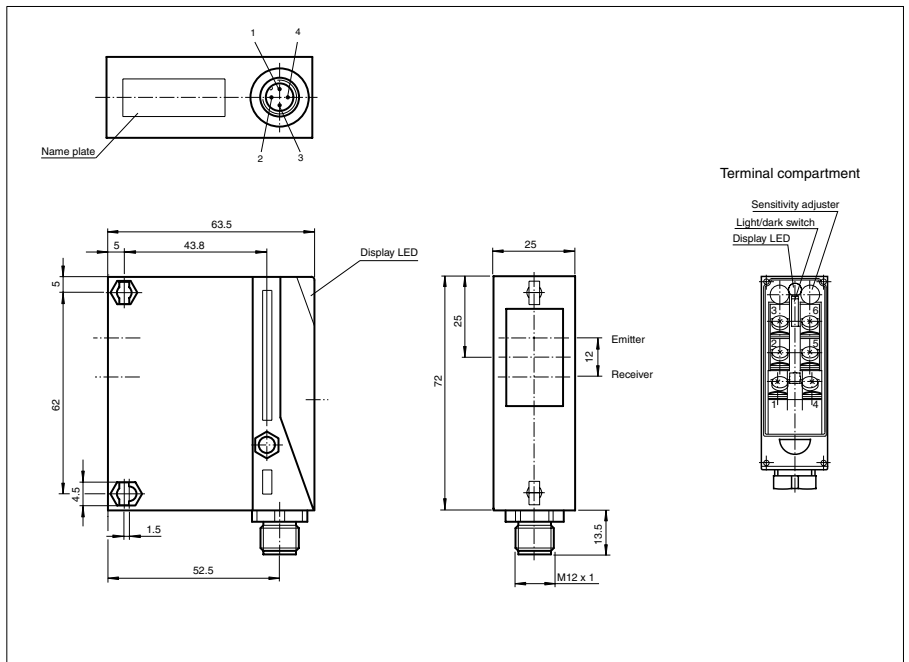
RL25-8-H-300/47/92

Background suppression sensor with M12, 4-pin metal connector

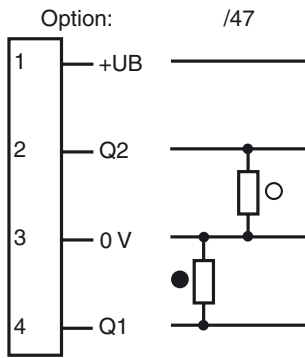
Features

- Compact design
- Pre-fault indication
- Sensing range adjuster and light/dark switch

Dimensions



Electrical connection



○ = Light on
● = Dark on

Release date: 2007-09-21 11:08 Date of issue: 2011-01-26 419502_ENG.xml

Technical data

General specifications

Detection range	20 ... 300 mm
Detection range min.	10 ... 100 mm
Detection range max.	20 ... 300 mm
Light source	IRED
Light type	modulated infrared light
Black/White difference (6 %/90 %)	< 10 %
Approvals	CE, cULus
Diameter of the light spot	approx. 10 mm at a distance of 300 mm
Angle of divergence	approx. 2 °
Ambient light limit	50000 Lux

Indicators/operating means

Function display	LED green, lights up with receiver lit , flashes when falling short of the stability control
Controls	Light/Dark switch
Controls	Detection range adjuster

Electrical specifications

Operating voltage	U_B	10 ... 30 V DC
Ripple		10 %
No-load supply current	I_0	40 mA

Output

Switching type	light/dark on	
Signal output	2 PNP, complementary, short-circuit protected, reverse polarity protected	
Switching voltage	max. 30 V DC	
Switching current	max. 200 mA	
Switching frequency	f	50 Hz
Response time		10 ms

Standard conformity

Standards	EN 60947-5-2
-----------	--------------

Ambient conditions

Ambient temperature	-20 ... 60 °C (-4 ... 140 °F)
Storage temperature	-20 ... 75 °C (-4 ... 167 °F)

Mechanical specifications

Protection degree	IP65
Connection	M12 connector, 4-pin
Material	
Housing	Terluran GV15
Optical face	glass
Mass	90 g

Approvals and certificates

CCC approval	Products with a maximum operating voltage of ≤ 36 V do not bear a CCC marking because they do not require approval.
--------------	--

Curves/Diagrams

