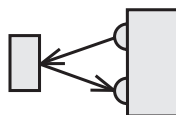


# Direct Detection Photoelectric Sensor



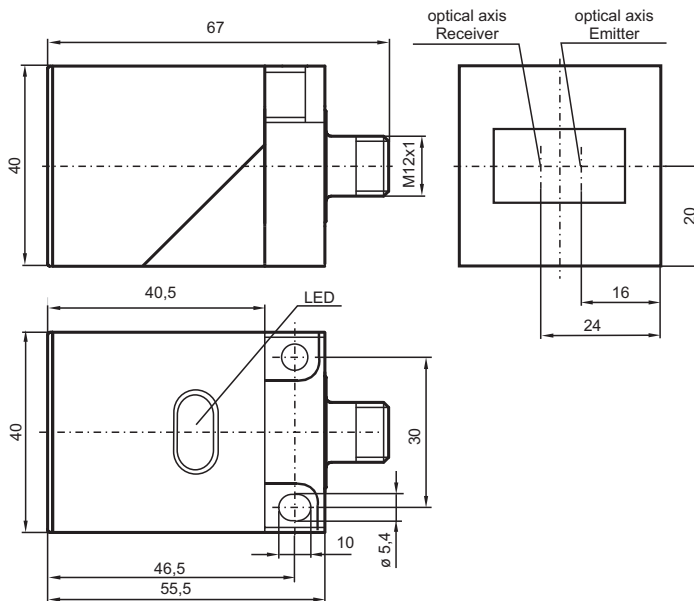
**OBH200-L2- □ \*1 - □ \*2**



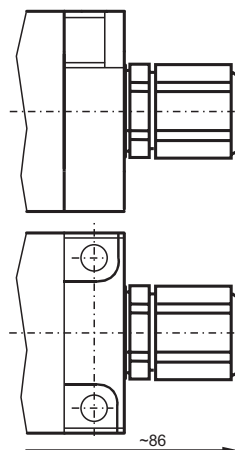
**200 mm**

## Features

- 200 mm sensing range
- Background suppression
- Visible red light
- Connector (M12x1) or QUICKON
- Protection class IP 67
- Variety of mounting possibility
- Complete mounting with only one tool - screw driver



Version Q2  
QUICKON

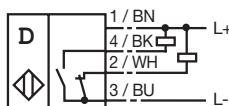


Cable sockets, mounting aids etc. see catalogue "Sensors 2"

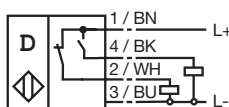
e. g. Cable sockets: V15-G-2M-PVC (straight)  
V15-W-2M-PVC (angled)

## Electrical Connection

A0



A2



11/88 01

F000310E

\*1 - electrical connection  
\*2 - mechanical connection

## Technical Data

<b>Model number</b>	<b>OBH200-L2-A0-V1</b> <b>OBH200-L2-A0-Q2</b> <b>OBH200-L2-A2-V1</b> <b>OBH200-L2-A2-Q2</b>
Sensing range	0 mm ... 200 mm
Light source	Visible red light 660 nm
Max. Switch frequency	100 Hz
Min. On delay	2.5 ms
Readiness delay	20 ms
Operating mode	Light ON
Indicators LED yellow	Switch status
LED red	Pre-fault
Ambient light limit	Sunlight ≤ 15 000 Lux Halogen light ≤ 7 500 Lux
<b>Electrical Data</b>	
Rated operational voltage	10 V DC ... 30 V DC, ± 10% ripple
Current consumption	≤ 20 mA
Switch output	A0: npn, N.O. A2: pnp, N.O.
Rated operational current	250 mA, circuit/overload proof
Voltage drop	≤ 1.5 V
<b>Mechanical Data</b>	
Protection class to EN 60 529	IP 67
Operating temperature	248 Kelvin ... 343 Kelvin (-25 °C ... +70 °C)
Storage temperature	233 Kelvin ... 353 Kelvin (-40 °C ... +80 °C)
Connection type	V1: Connector M12x1 Q1: Quickon quick release connector cable external cross 6 mm <sup>2</sup> ... 9 mm <sup>2</sup> core cross section ≤ 3 mm <sup>2</sup>
Optical system	PMMA 2 lens system
Housing	PBT
Material front lense	Scratch resistant plastic lens
Weight	60 g
Conforms to	EN 60947-5-2

### Characteristic response curve

Permissible distance (offset) between optical axis and object.

