

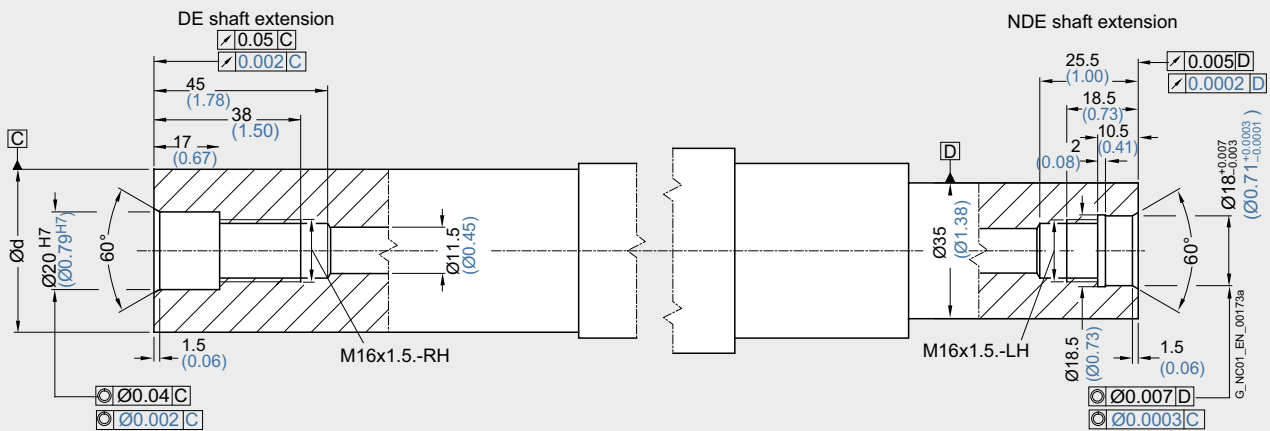
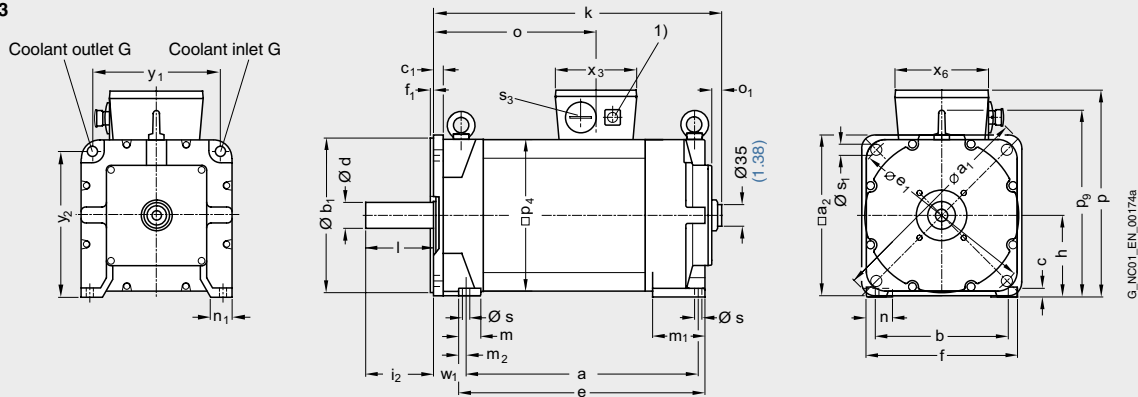
# Asynchronous motors Dimension drawings

## 1PM4 motors Water cooling

For motor		Dimensions in mm (in)																			
Shaft height	Type	DIN IEC	a B	a <sub>1</sub> P	a <sub>2</sub> -	b A	b <sub>1</sub> N	c HA	c <sub>1</sub> LA	e BB	e <sub>1</sub> M	f AB	f <sub>1</sub> T	G -	h H	i <sub>2</sub> -	k LB	m BA	m <sub>1</sub> -	m <sub>2</sub> -	
<b>1PM4, type of construction IM B35, water cooling</b>																					
100	<b>1PM4101</b>	304	250	196	160	180	11	12	326	215	190	4	G1/4	100	80	389	35	60	11		
	<b>1PM4105</b>	409							431								494				
132	<b>1PM4133</b>	377	350	260	216	250	14	16	400	300	246	5	G3/8	132	110	468	36	85	12		
	<b>1PM4137</b>	497							520								588				

Motor		Dimensions in mm (in)																		DE shaft extension	
Shaft height	Type	DIN IEC	n AA	n <sub>1</sub> -	o -	o <sub>1</sub> -	p HD	p <sub>4</sub> AC	p <sub>9</sub> -	s K	s <sub>1</sub> S	s <sub>3</sub> -	w <sub>1</sub> C	x <sub>3</sub>	x <sub>6</sub>	y <sub>1</sub> -	y <sub>2</sub> -	d D	l E		
100	<b>1PM4101</b>	37	35	199	18	259	190	233	12	14	M32x1.5	44	117	122	154	177	38	80			
	<b>1PM4105</b>	304		12																	
132	<b>1PM4133</b>	43	35	264	16	335	245	302	12	18	M40x1.5	53	132	152	206	235	42	110			
	<b>1PM4137</b>	384		15.12																	

**1PM410  
1PM413**



1) Signal connection.